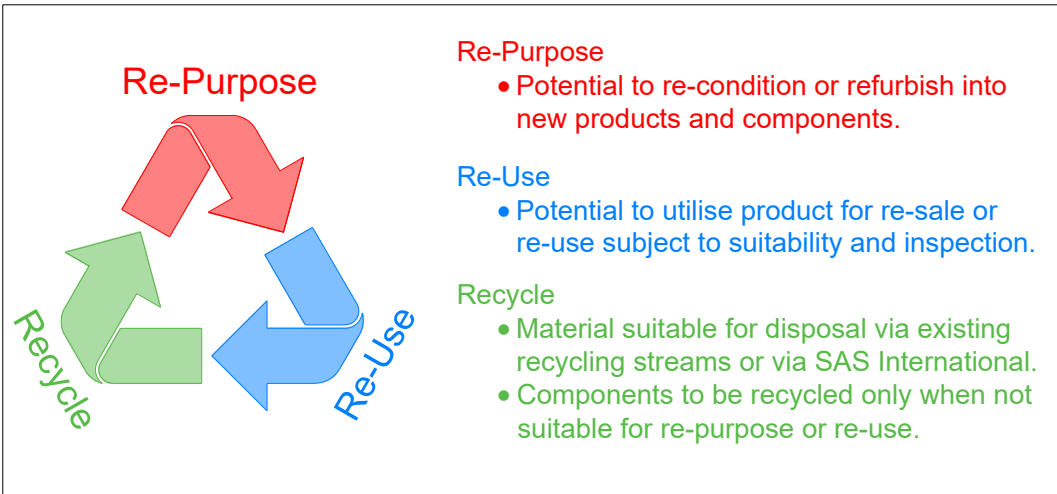




# Product End of Life Cycling Streams

As part of SAS International's on-going commitment to Sustainability and Circularity, the following guides are designed to help and support the disassembly of products and identification of component materials into each cycling pathway.

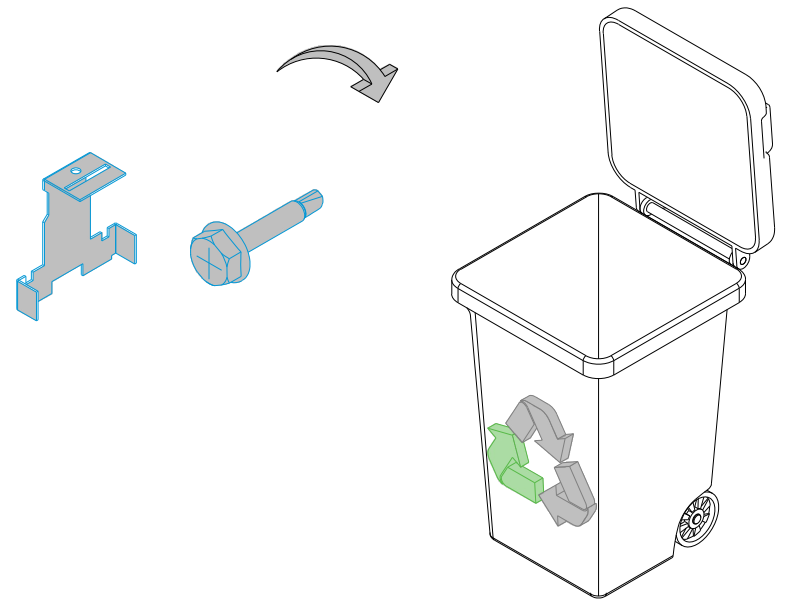
SAS International also offers a 'take back' scheme for all products, components and materials which are identified within the Re-purpose and Reuse (B, D and F) categories. Please contact us for further information:



## Material End of life Categories Guide

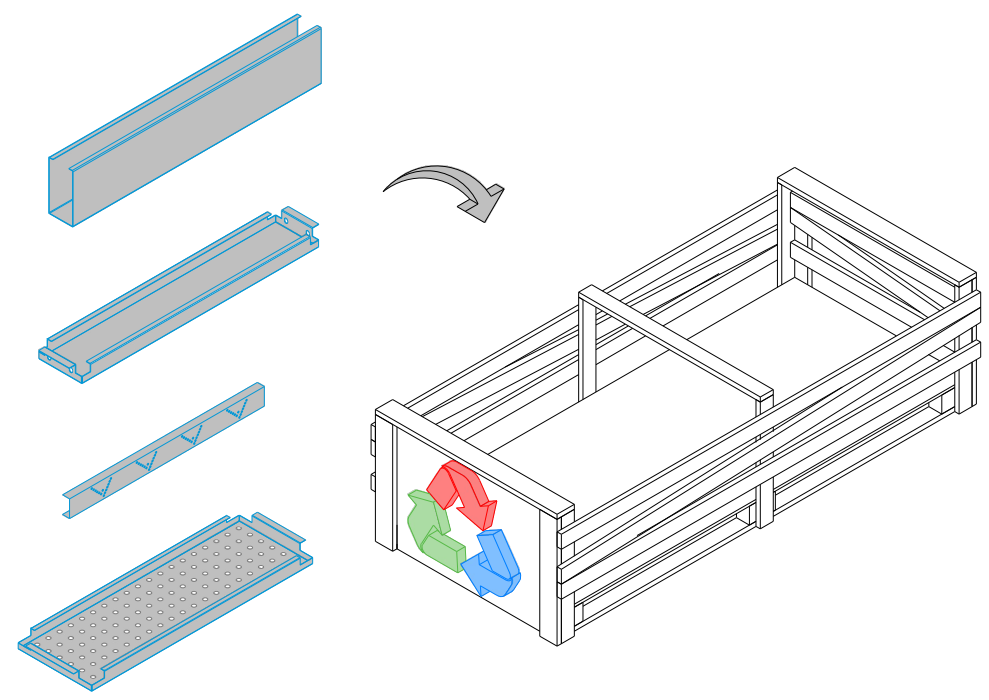
Steel Fixings, Brackets and Hangers

**A**



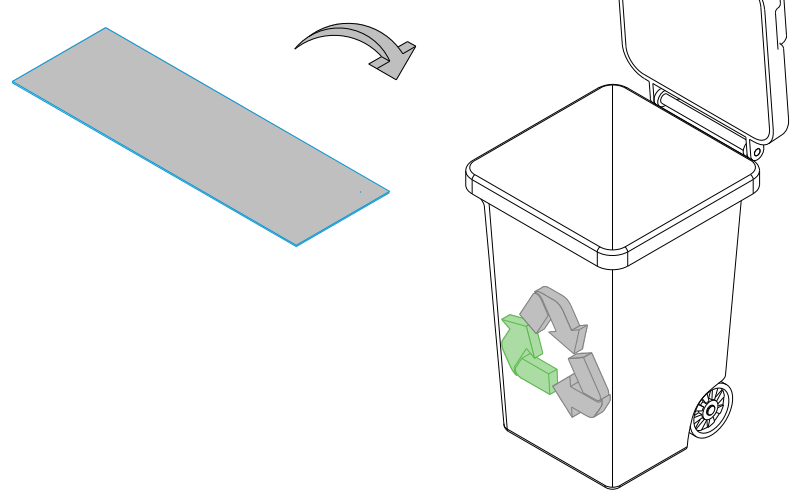
Steel Tiles, Grid, C-Profiles, Channels and Linear Profiles

**B**



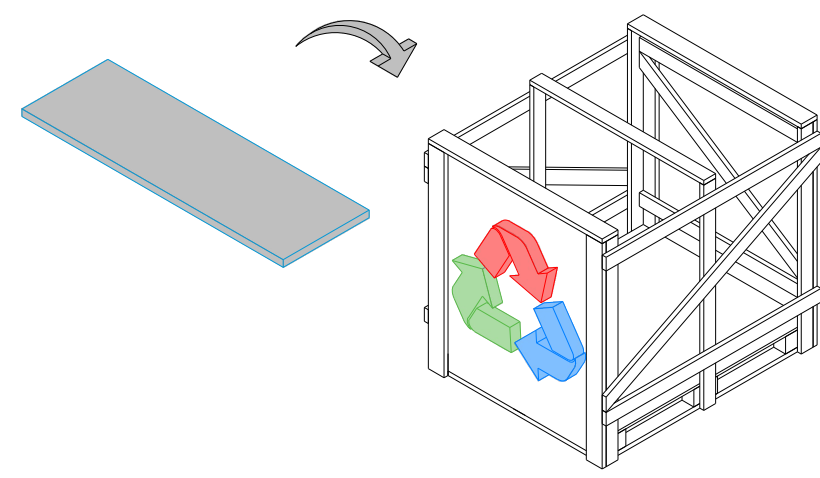
Aluminium Foil

**C**



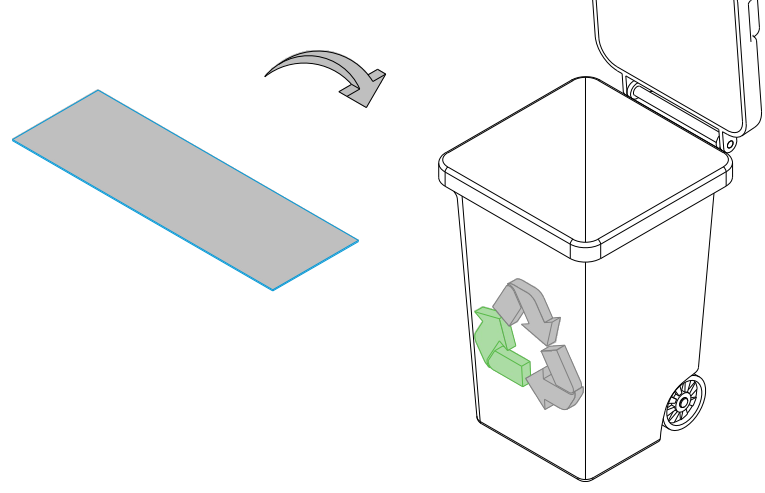
Acoustic Insulation Core

**D**



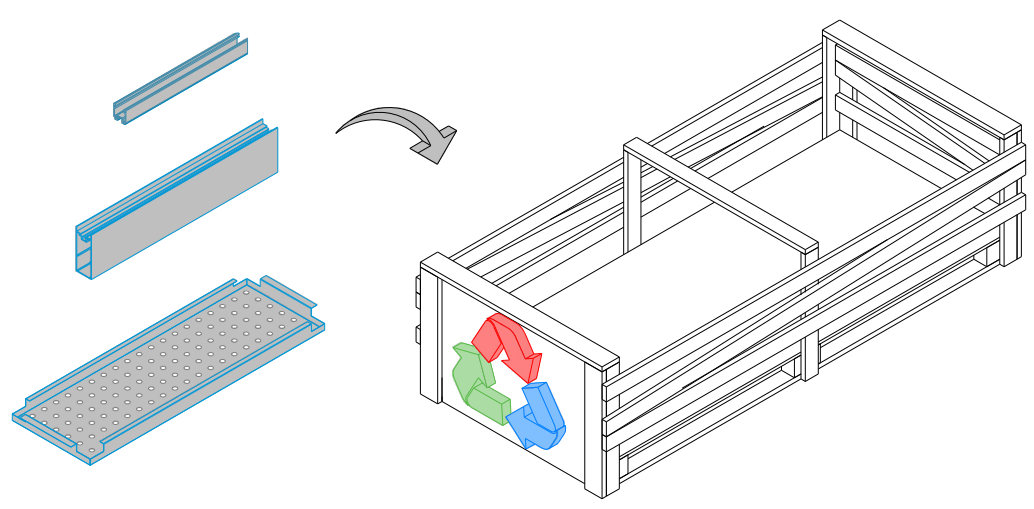
Non-woven Tissue Facing

**E**

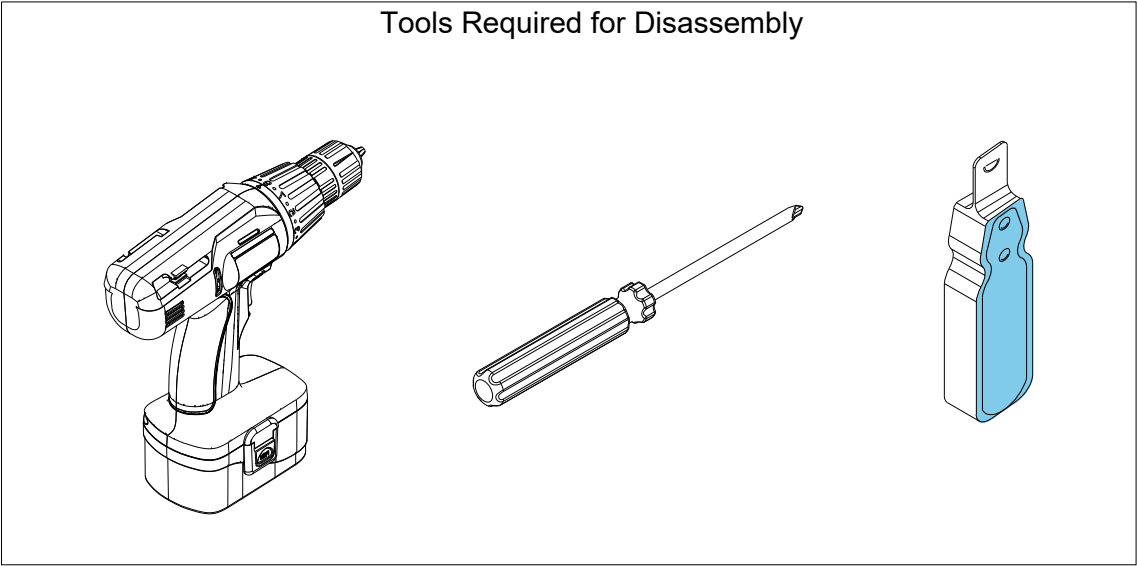


Aluminium Tiles, Grid, Linear Profiles, Brackets

**F**

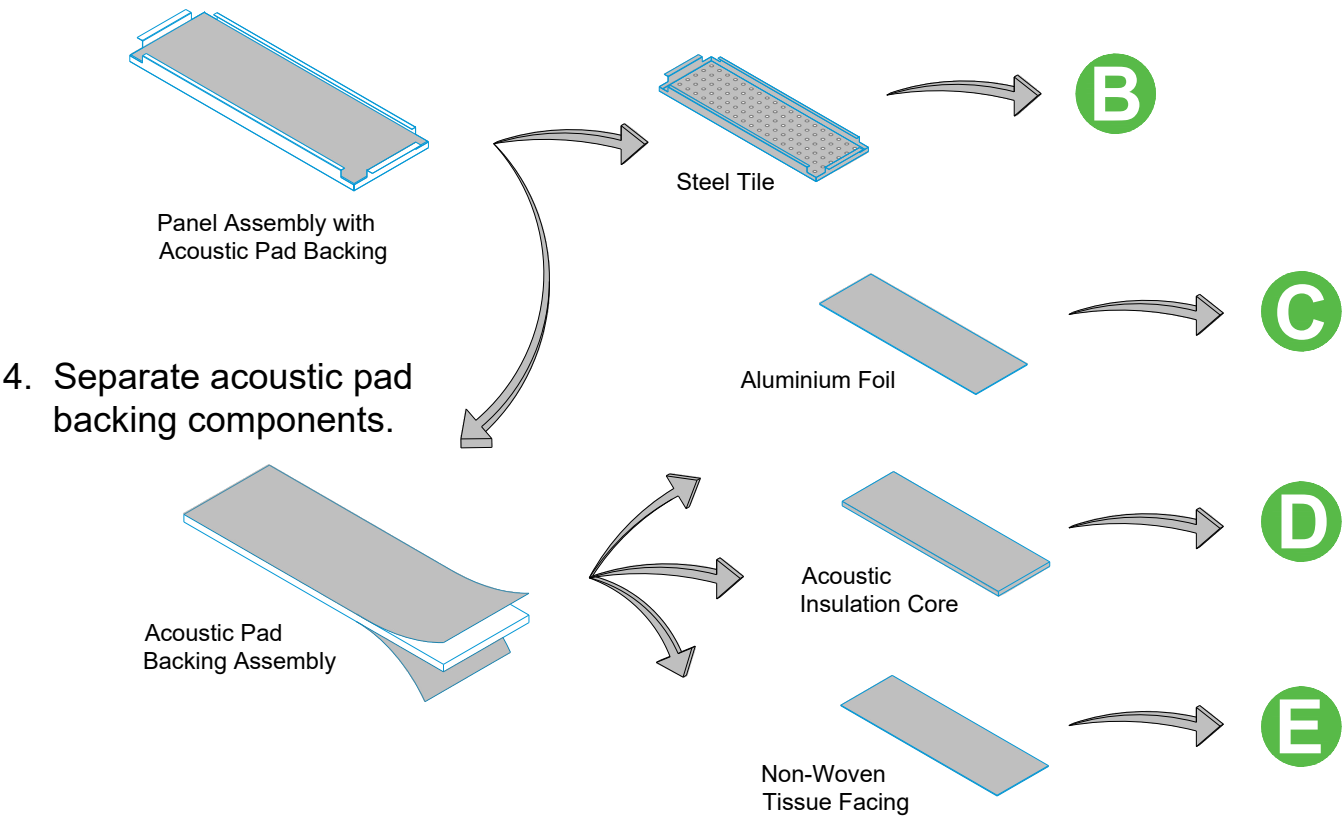


Disassembly of Products Common to Multiple Systems



Panel Assembly

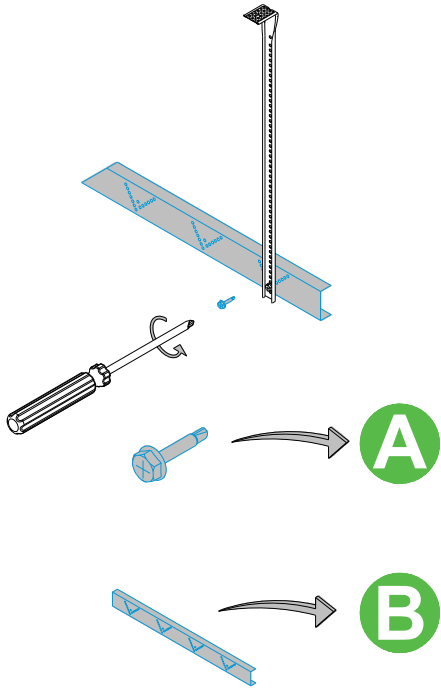
1. Separate acoustic pad backing from tile.



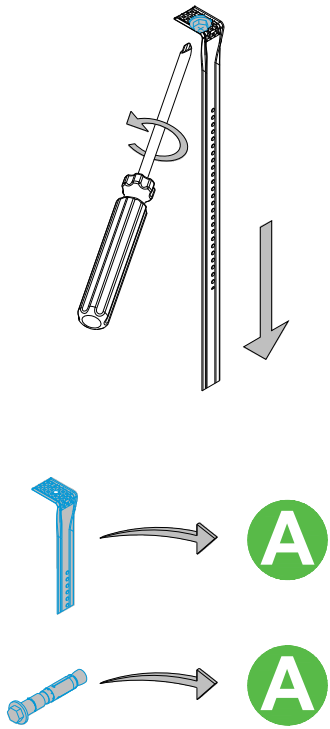
4. Separate acoustic pad backing components.

Emac

1. Remove fixings and Emac Channel.

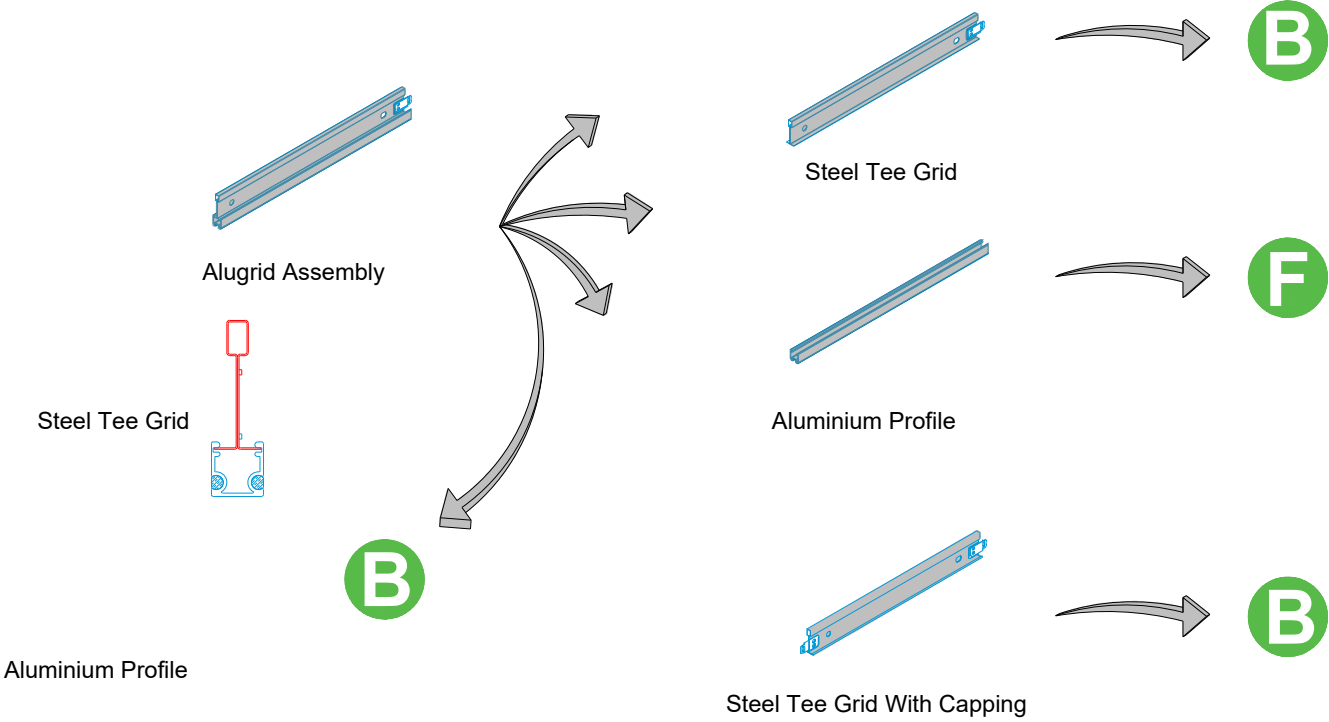


2. Remove fixings and Emac hangers.



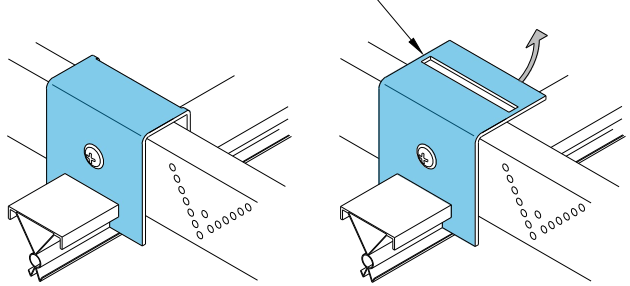
Alugrid/ Tee Grid

1. Separate Tee Grid from Aluminium Extrusion.



Bracket connection to primary grid

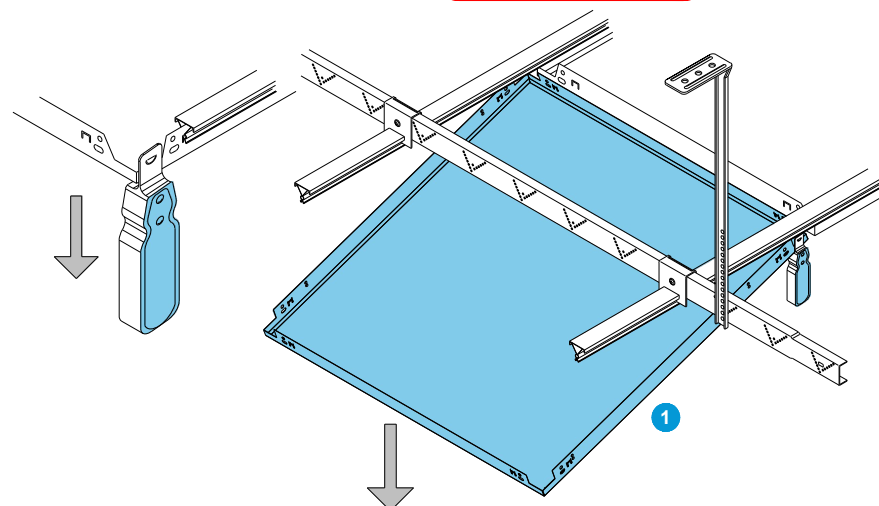
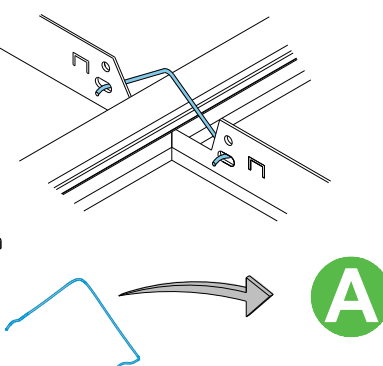
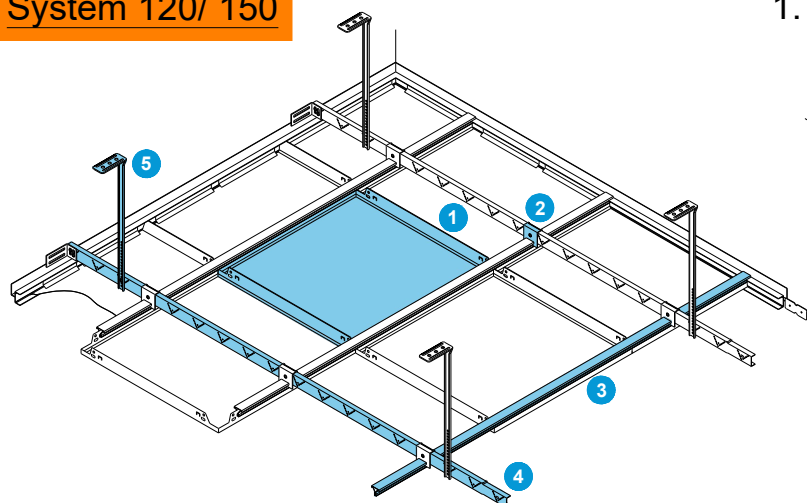
Un-bend soft fold in bracket by hand or with a screwdriver prior to removing bracket



## System 120/ 150

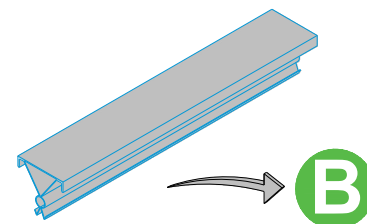
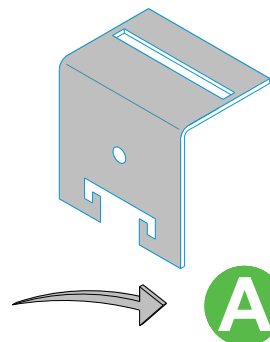
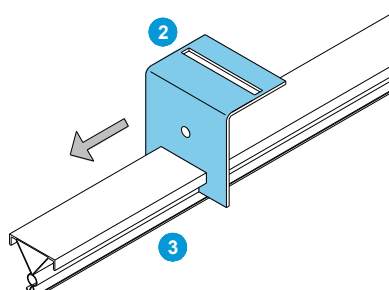
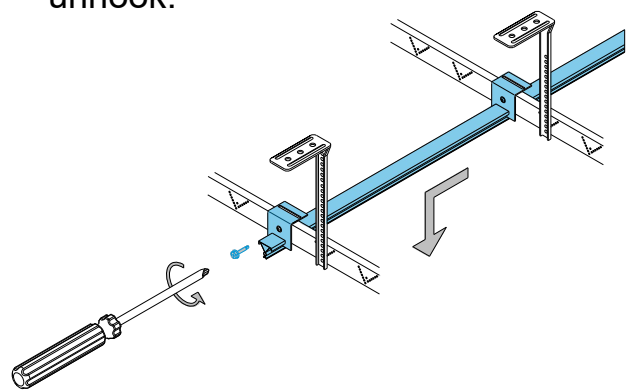
1. Remove security clips.  
(only if installed)

2. Remove panels. See **Panel Assembly**



3. Remove fixings from brackets and unhook.

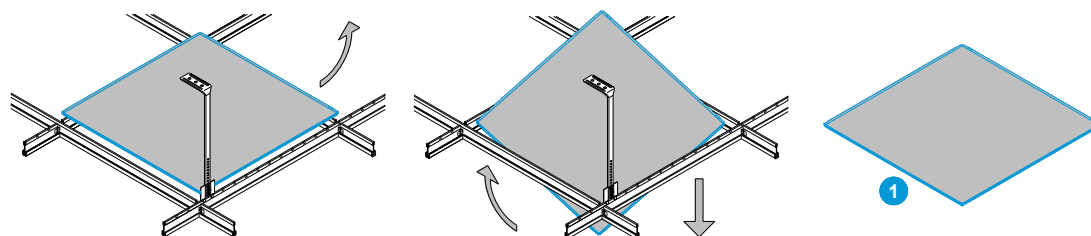
4. Slide brackets off spring tee.



5. Remove suspension and grid. See **Emac**

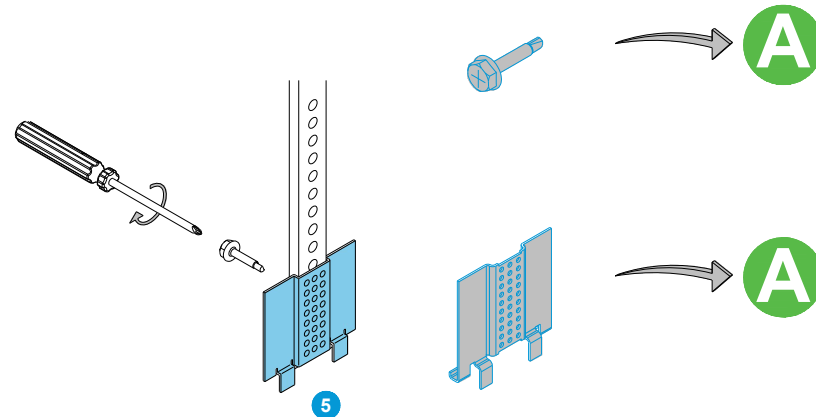
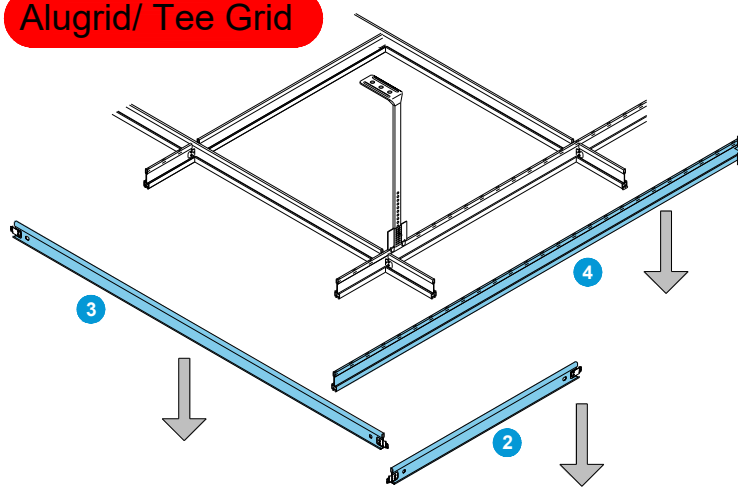
## System 130

1. Remove panels. See **Panel Assembly**



2. Remove noggins, then cross tees, then main runners.  
See **Alugrid/ Tee Grid**

3. Remove fixings and brackets.

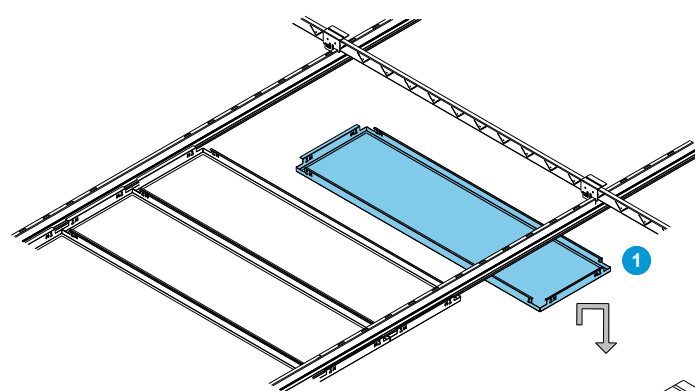
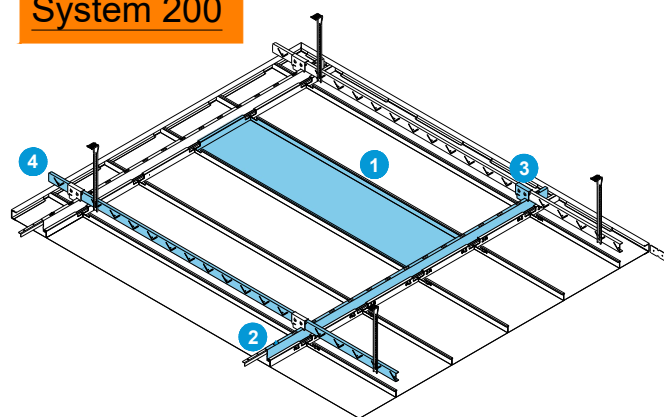


4. Remove suspension. See **Emac**

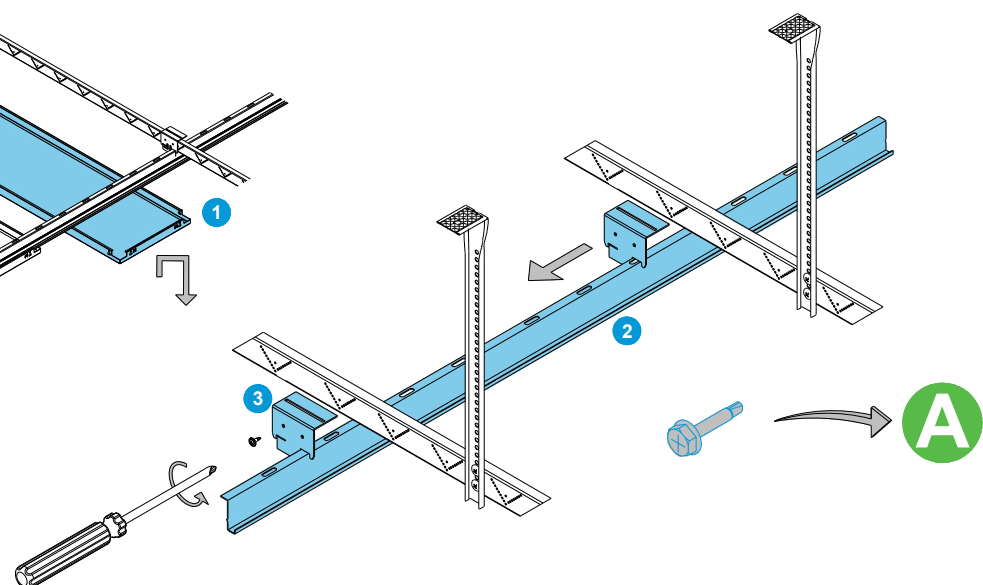
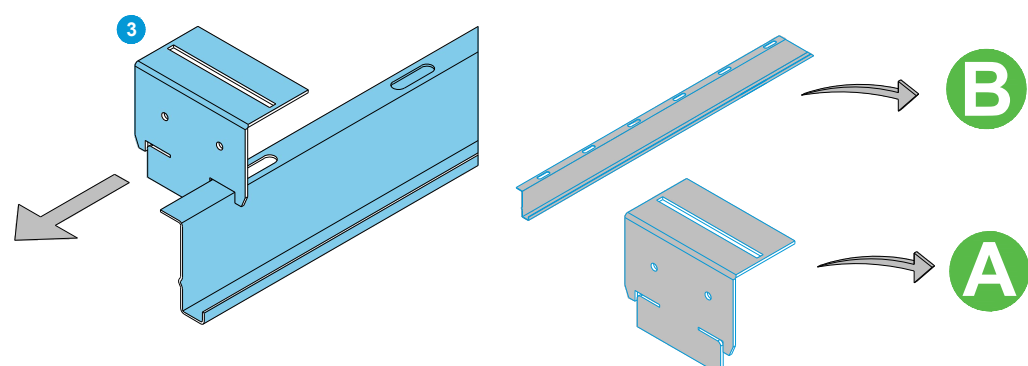
## System 200

1. Remove panels. See **Panel Assembly**

2. Remove fixings from bracket and unhook J-bar.



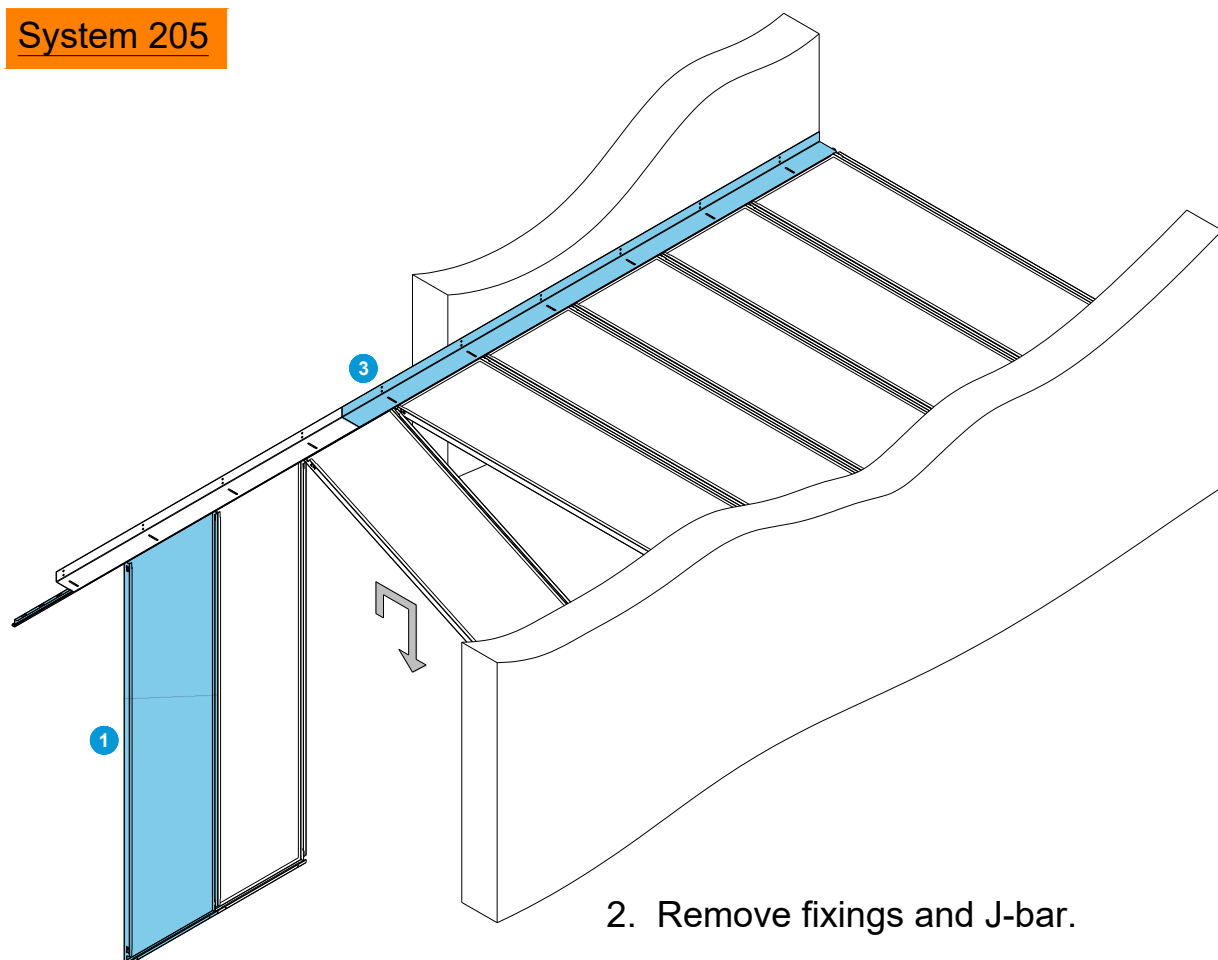
3. Slide bracket off J-bar.



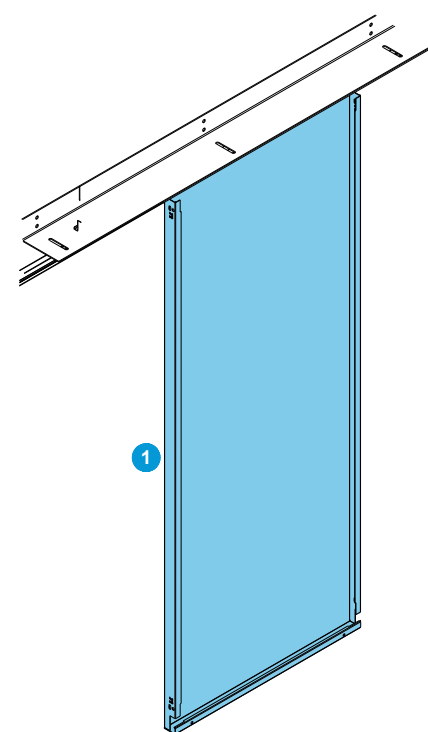
4. Remove suspension and grid. See **Emac**



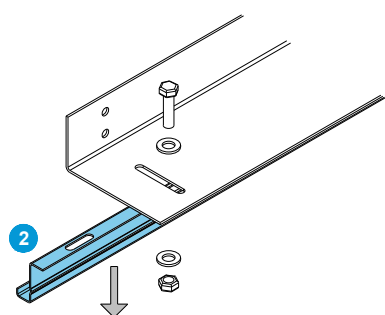
## System 205



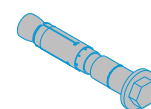
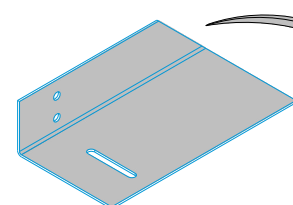
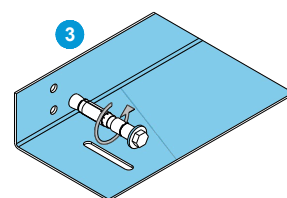
1. Remove panels.  
See **Panel Assembly**



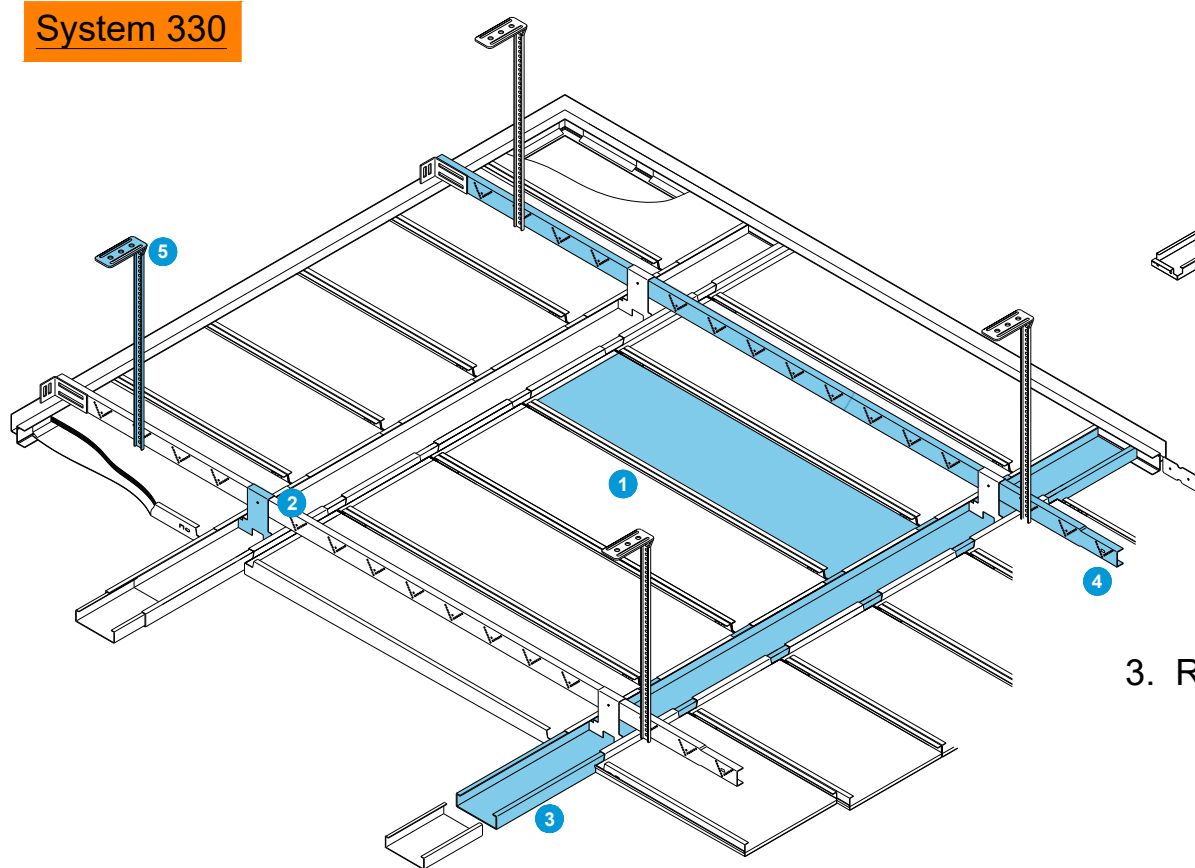
2. Remove fixings and J-bar.



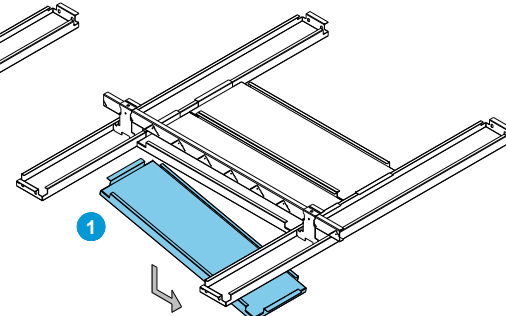
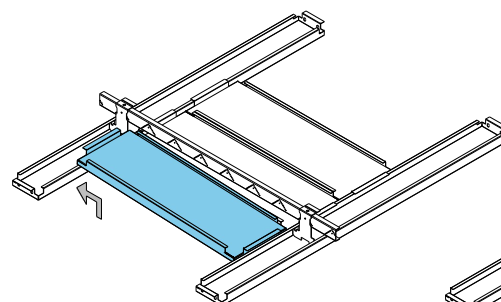
3. Remove wall fixings and closure angle.



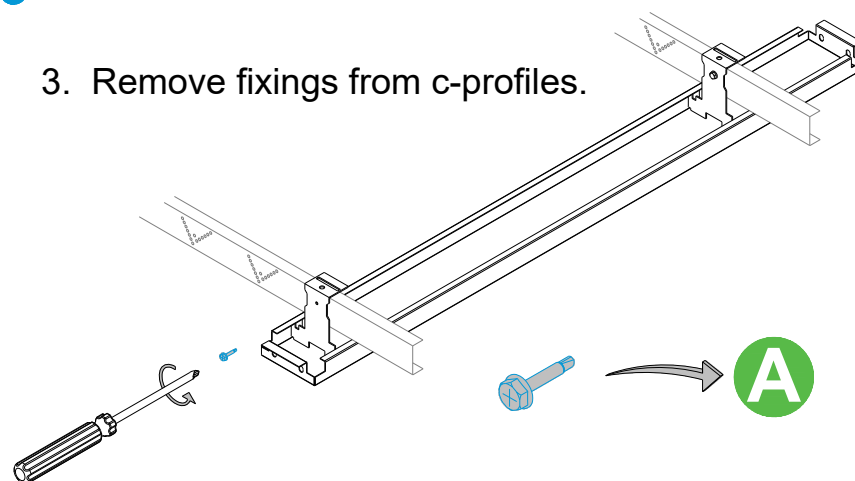
## System 330



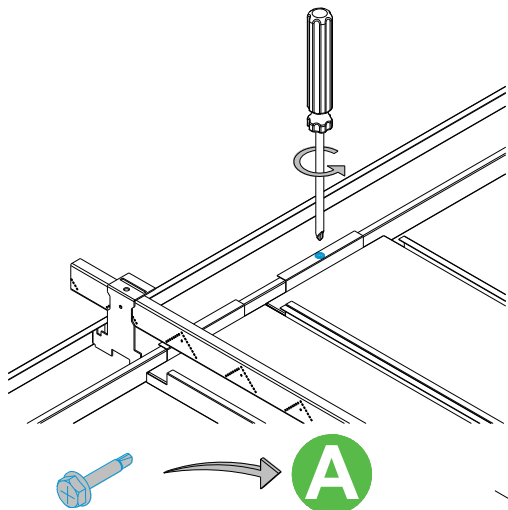
2. Remove panels. See **Panel Assembly**



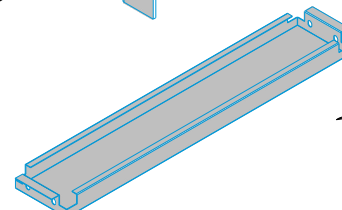
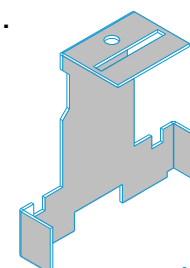
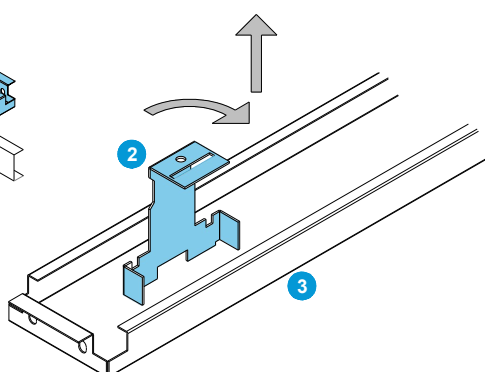
3. Remove fixings from c-profiles.



1. Remove security fixings.

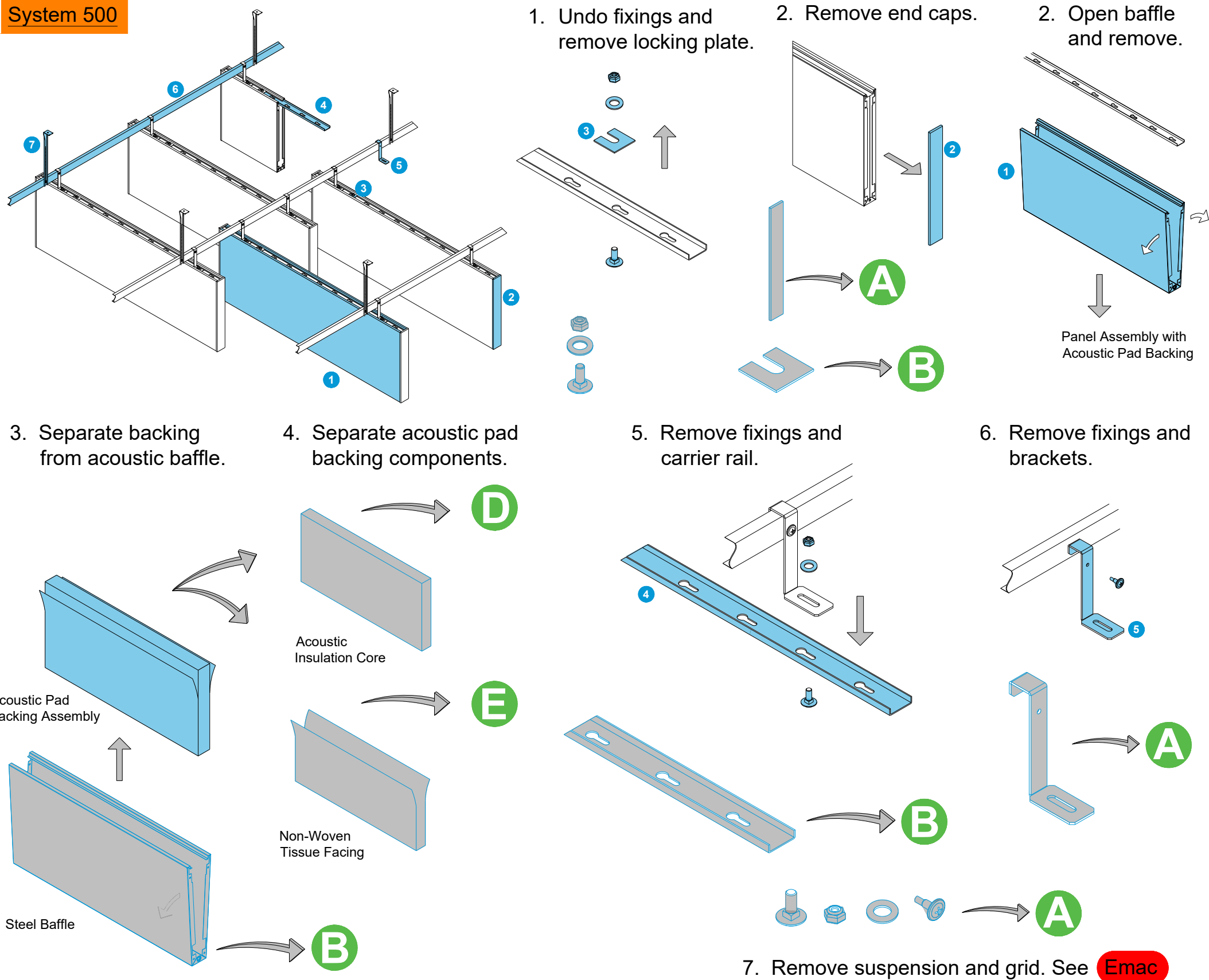


4. Remove c-profile and brackets.

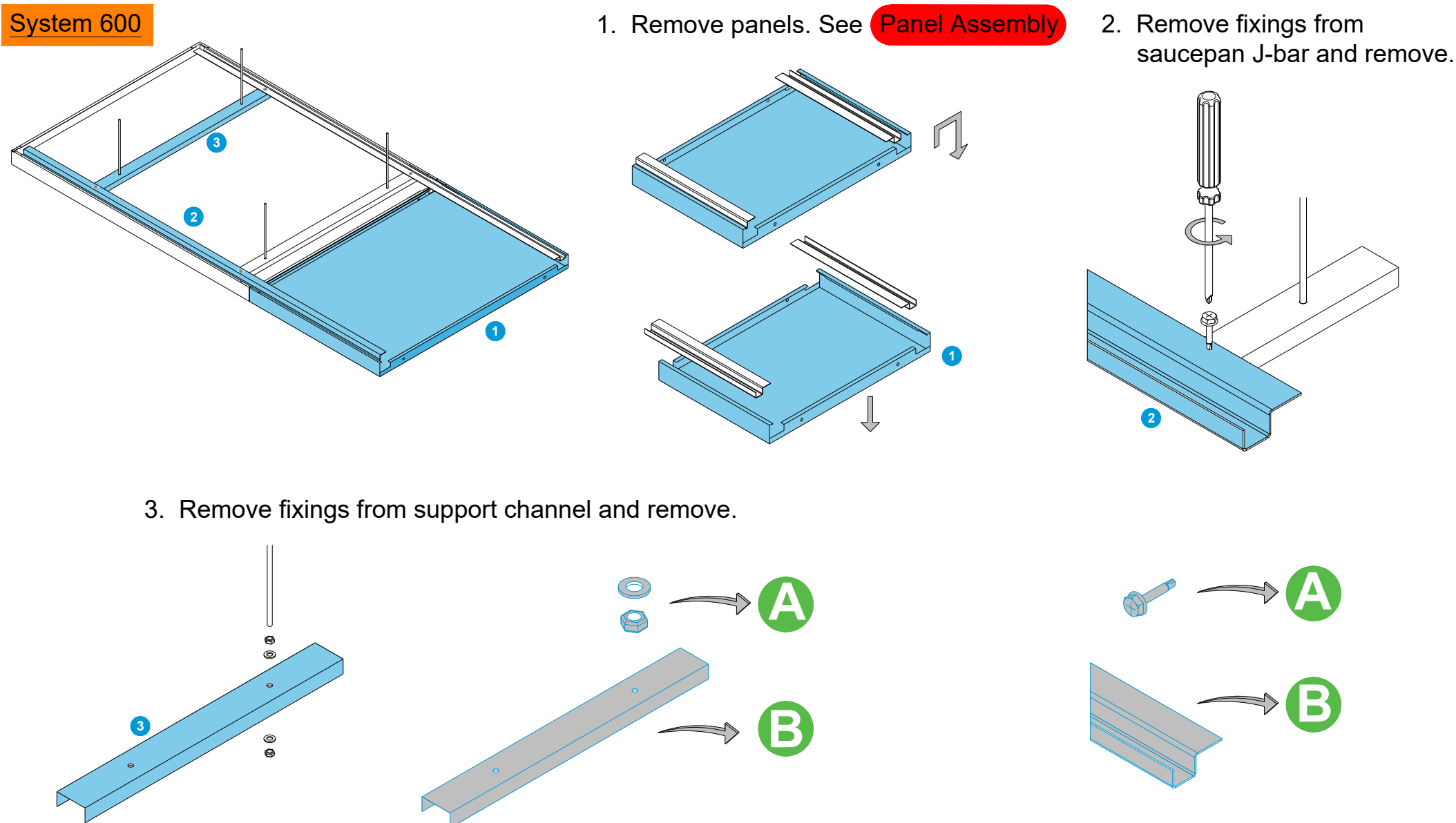


5. Remove suspension and grid. See **Emac**

## System 500



## System 600

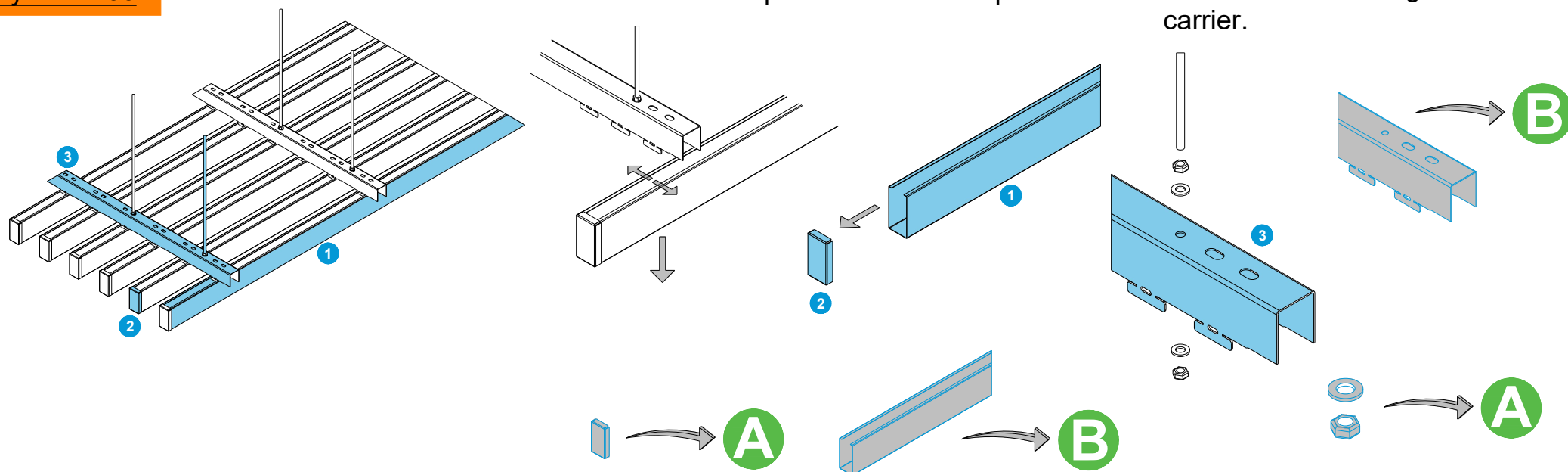




## System 700

1. Remove profiles and end caps.

2. Remove carrier fixings and carrier.

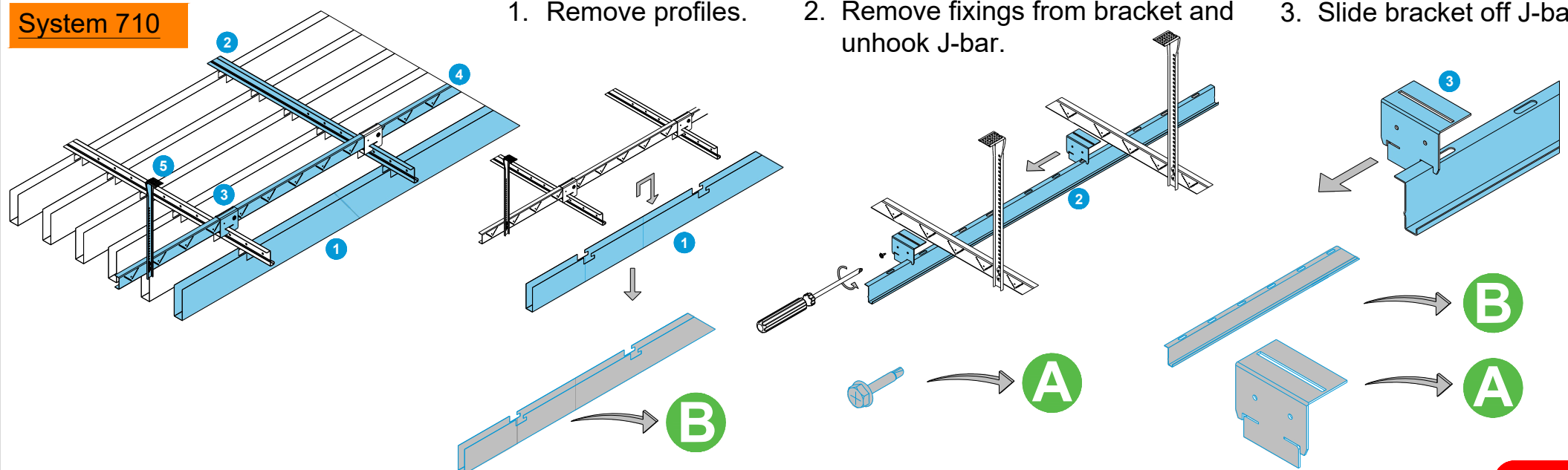


## System 710

1. Remove profiles.

2. Remove fixings from bracket and unhook J-bar.

3. Slide bracket off J-bar.

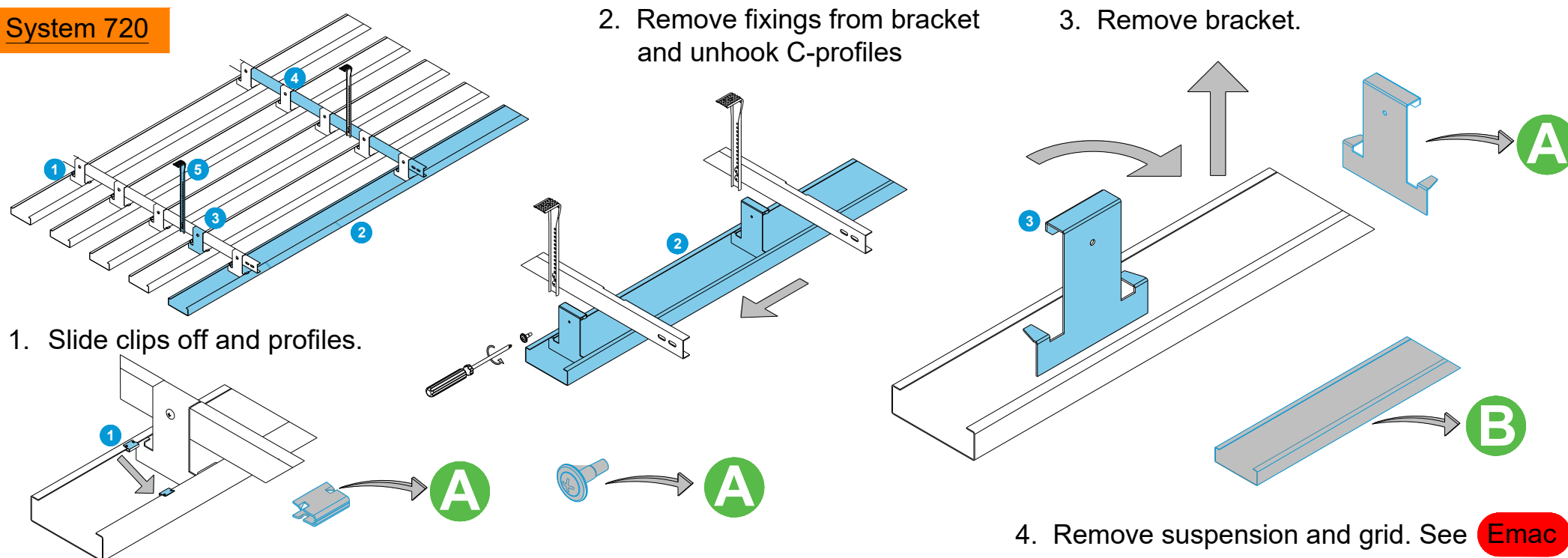
4. Remove suspension and grid. See **Emac**

## System 720

2. Remove fixings from bracket and unhook C-profiles

3. Remove bracket.

1. Slide clips off and profiles.

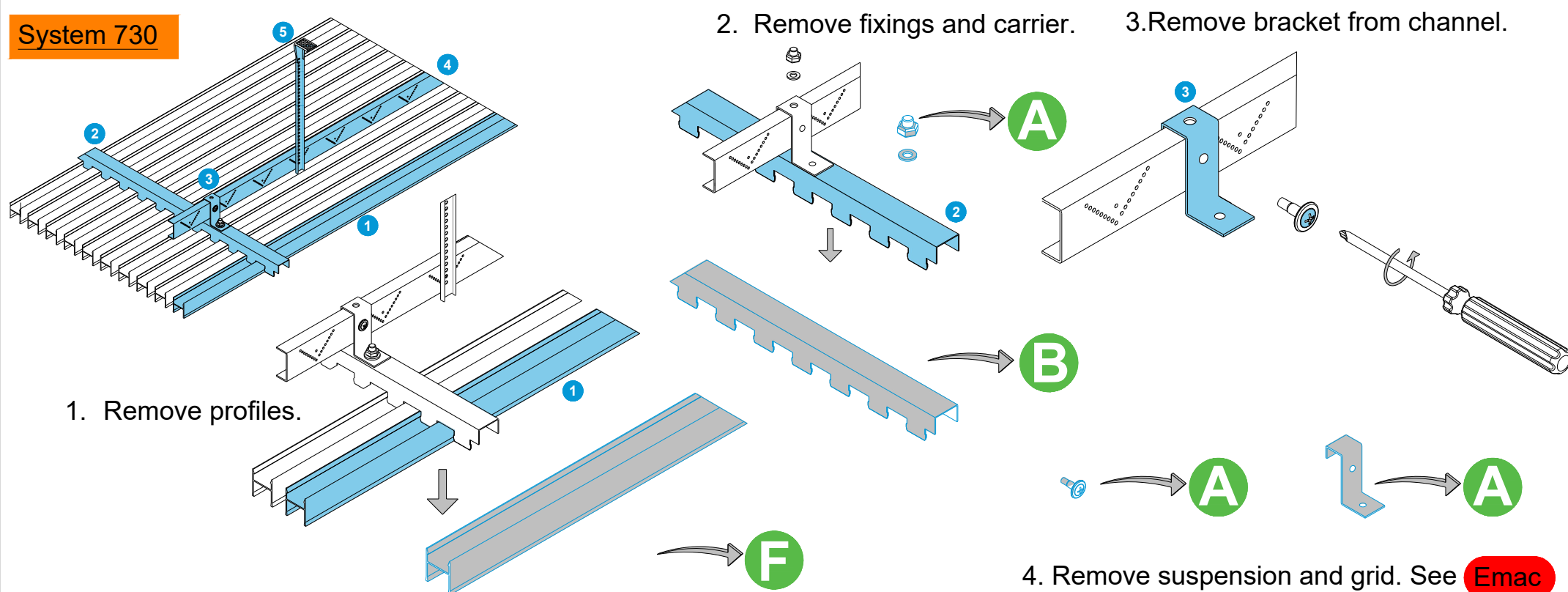


## System 730

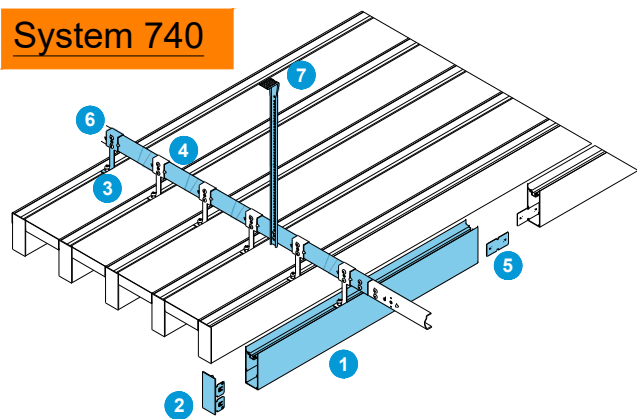
2. Remove fixings and carrier.

3. Remove bracket from channel.

1. Remove profiles.

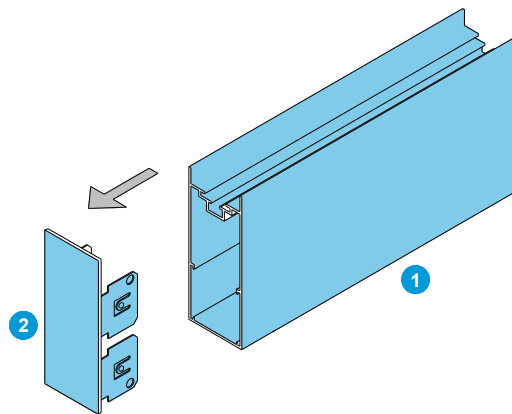


## System 740

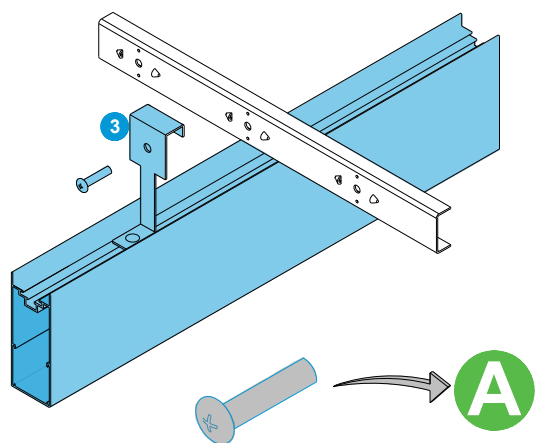
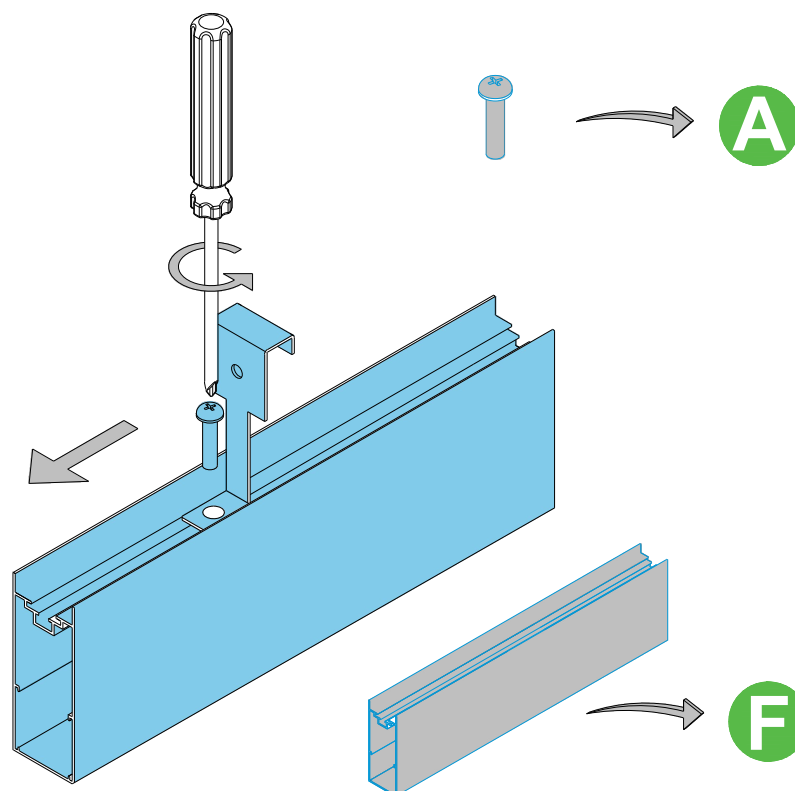


1. Remove fixings from brackets, unhook profiles.

2. Remove end caps.



3. Remove fixings, slide brackets off profiles



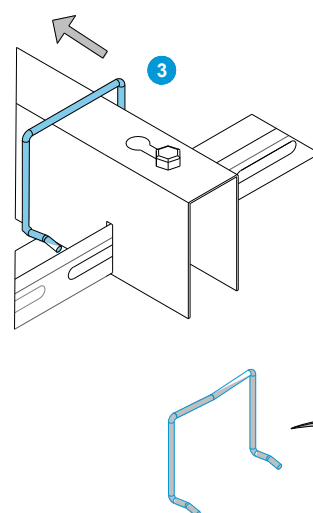
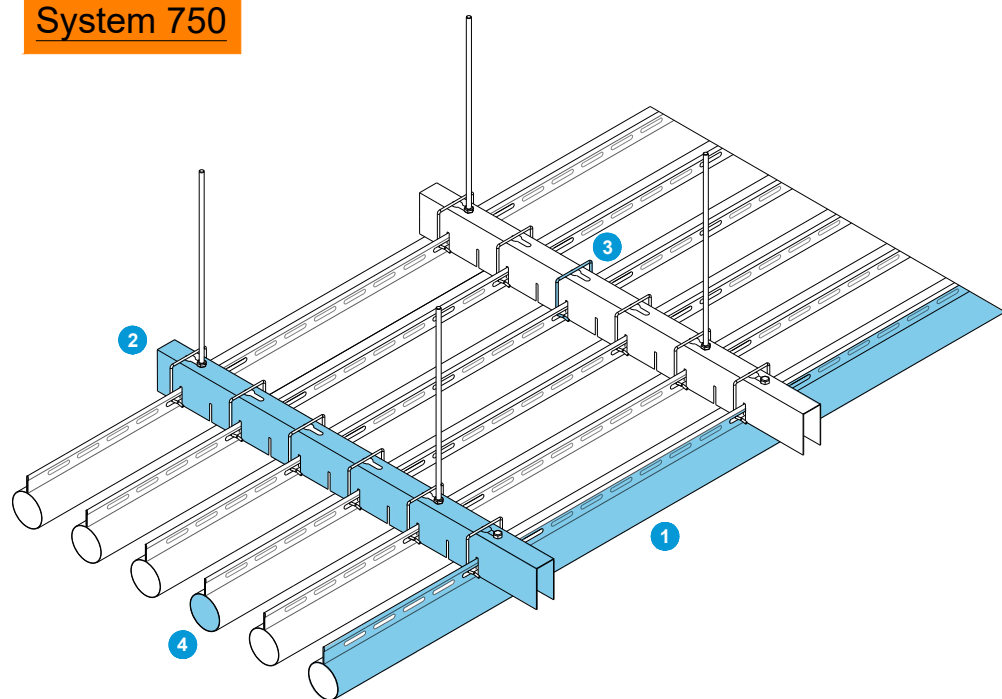
B

F

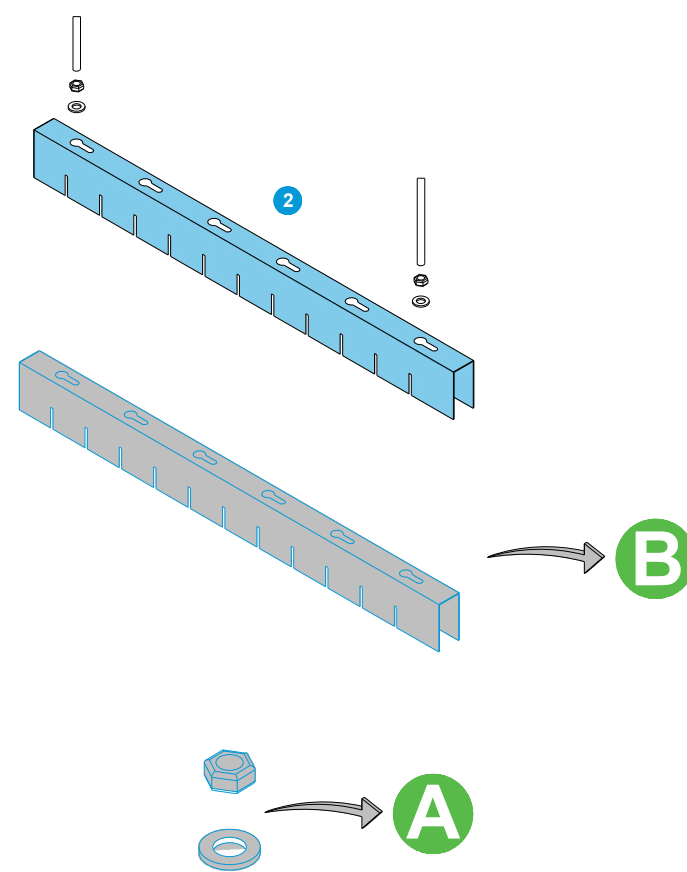
4. Remove suspension and grid. see **Emac**

## System 750

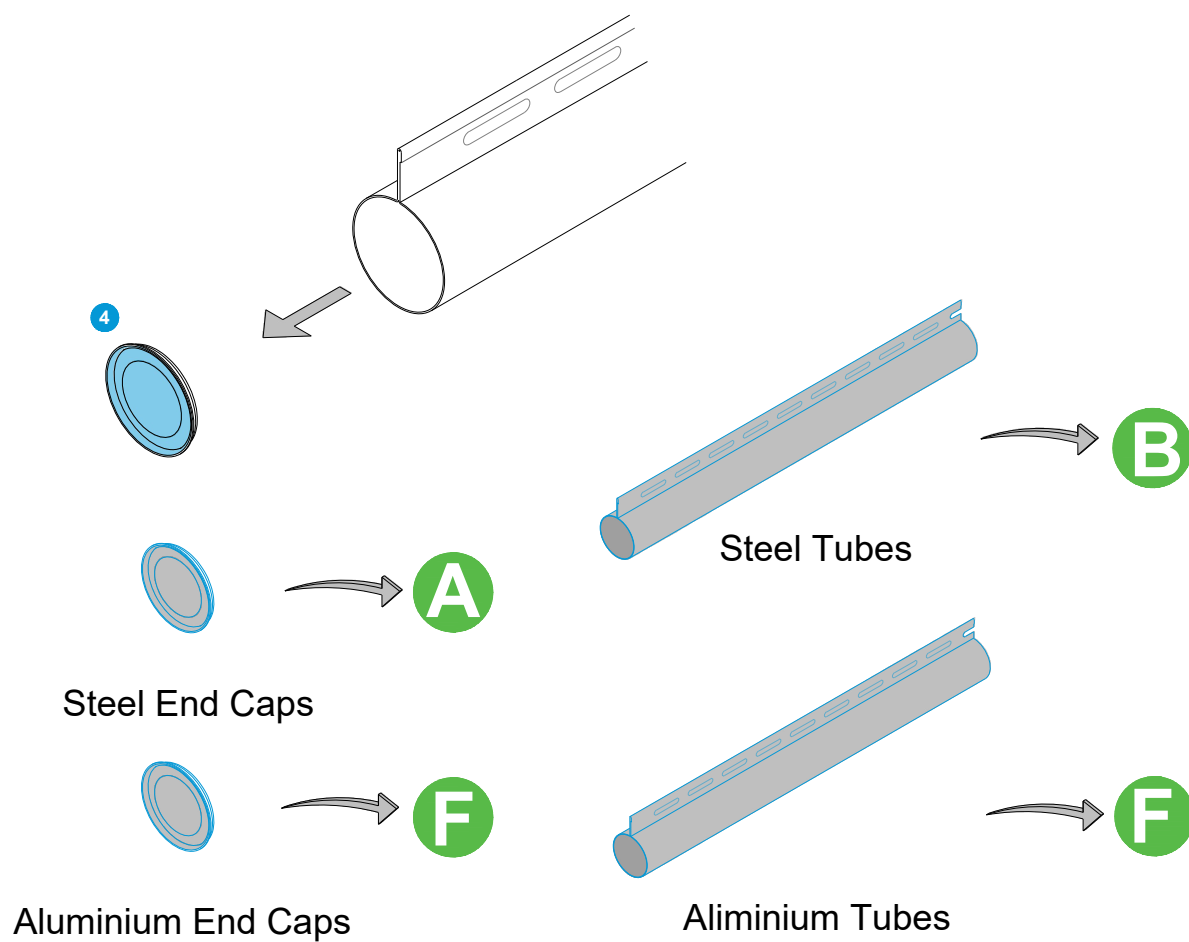
2. Remove suspension clips and profiles.



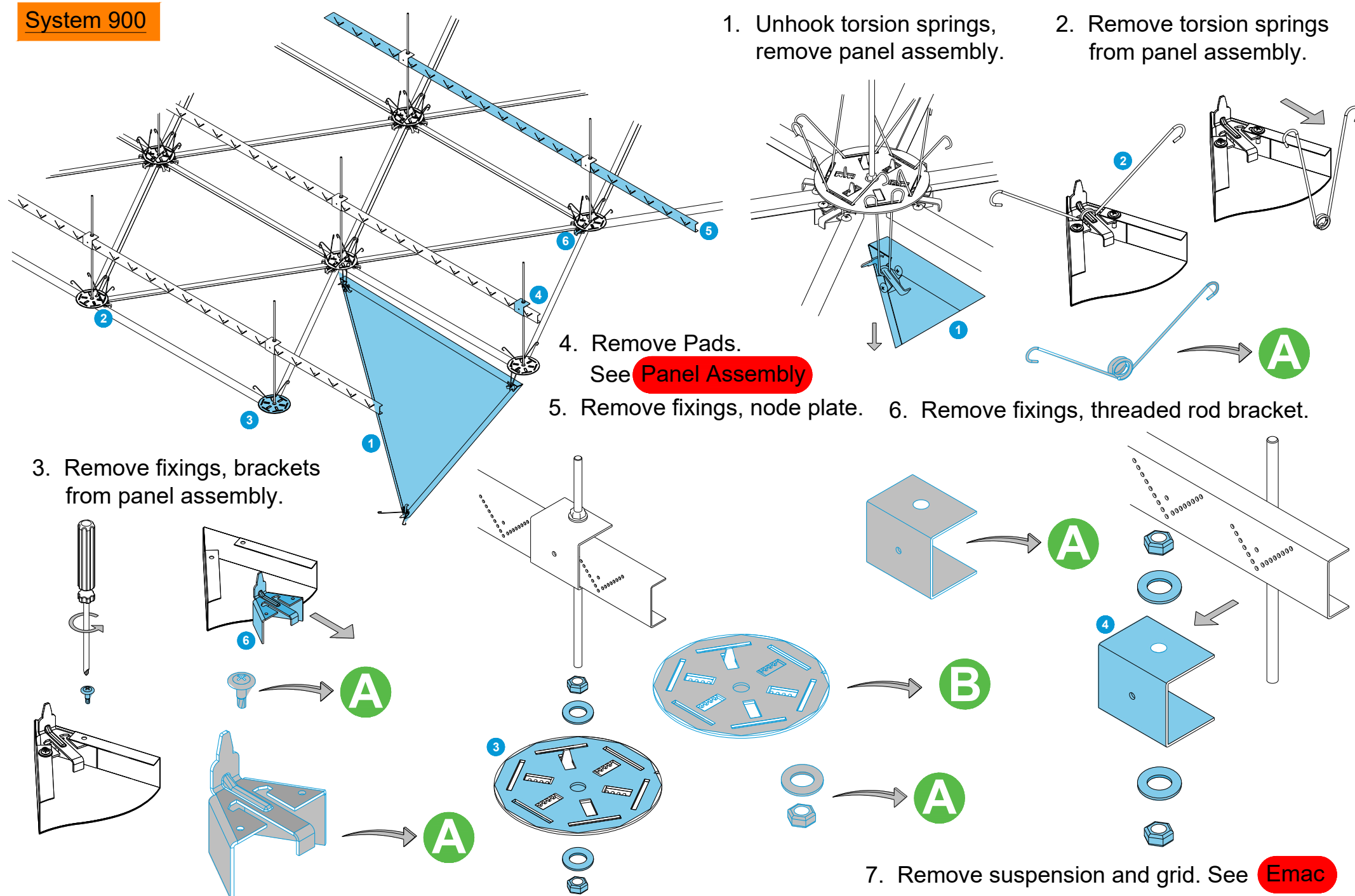
3. Remove suspension and grid.



2. Separate end caps from profiles.



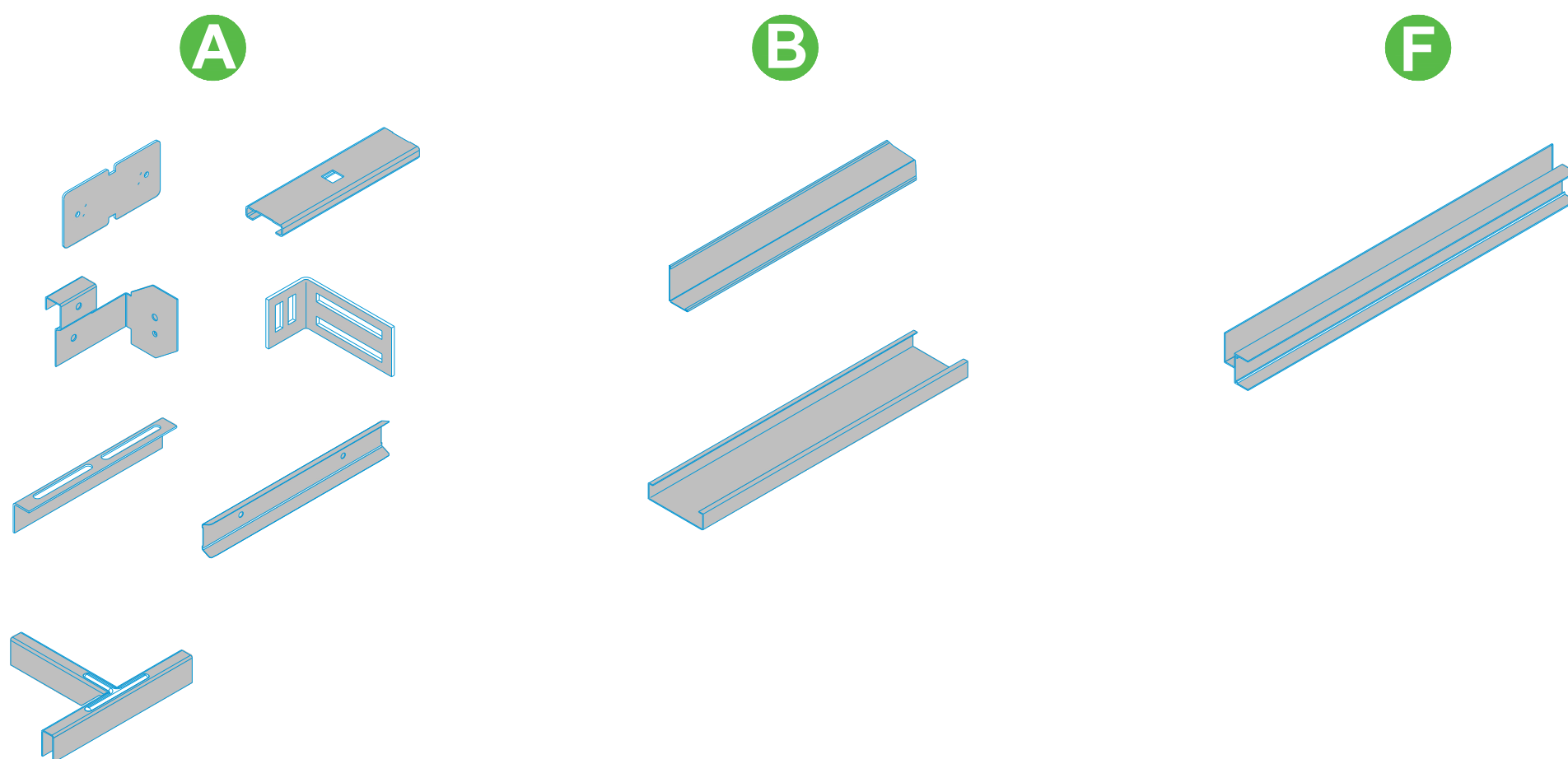
## System 900



## System Misc

All Steel Splices, Brackets

All Steel Grid, Channels, Angles

All Perimeter Trims and other  
Aluminium Extrusions, Aluminium  
Brackets, Aluminium Panels

For more information on recycling SAS products,  
contact the SAS technical department @  
[technicalsupport@sasint.co.uk](mailto:technicalsupport@sasint.co.uk)